



Wine Thread selection

Loose nut BSM three piece
Welded assembly

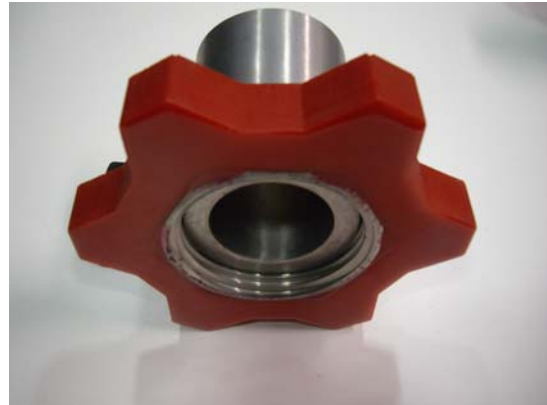


Same as above with a rubber
Protector ring



BSM nut with inbuilt
Poly urethane protector ring

Only to be sold with complete
Assemblies !!



The three loose items for a loose
Nut BSM style fitting

Bulb type hose tail
Liner ring
Loose BSM nut
OR Slotted Loose BSM Nut
These have to be welded together



ABH crimp style loose nut
BSM style coupling

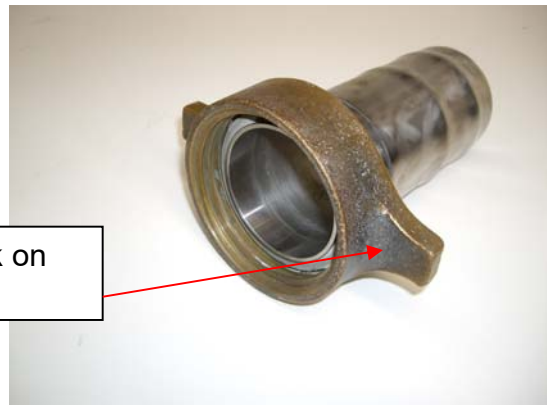


ABH crimp style, Loose nut
BSM coupling



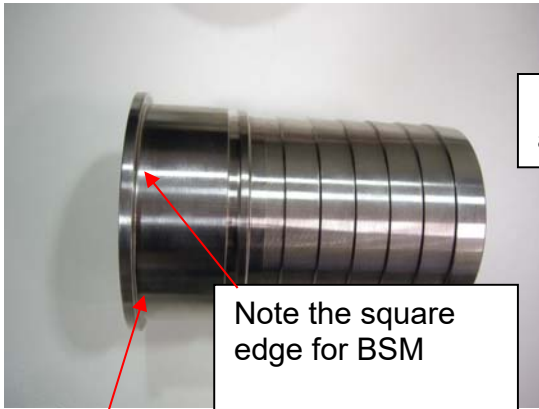
Commonly known as Wine Thread
The nuts are brass

Note the two large Knock on
lugs

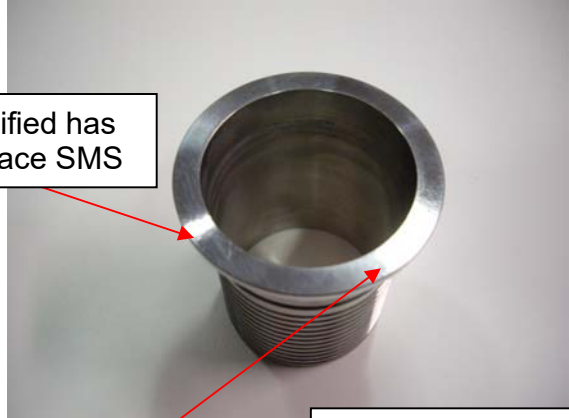


Hose assemblies made with
Wine Thread fittings





Note the square edge for BSM



BSM Modified has a full flat face SMS

BSM normal flat faced fittings have a recess on the inner ID



BSM couplings

have a square edge
At this point.

Two types of BSM exist

Modified BSM (SMS)

Flat Faced BSM



Tri Clover fittings have a taper on the back edge of the fitting
Also the front face can be grooved for a Seal of two different shapes

Tri Clover style fittings